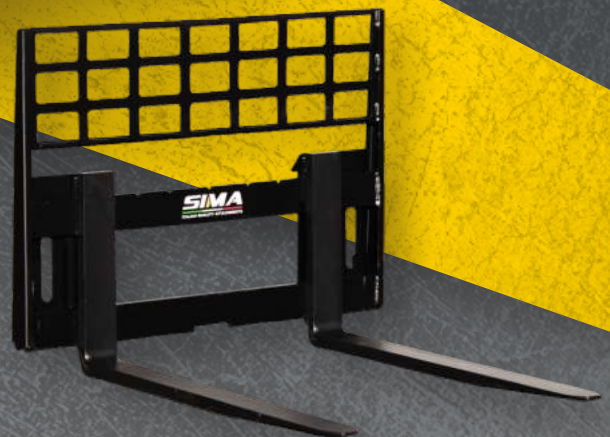
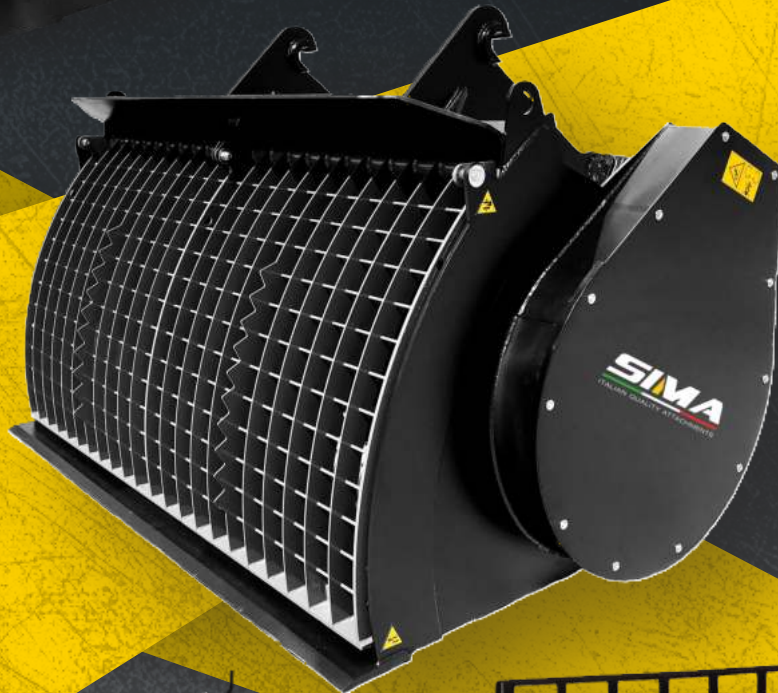


# SIMA

30 YEARS  
1992-2022

ITALIAN QUALITY ATTACHMENTS



**QUALITY | SERVICE | FLEXIBILITY**





**SIMA HAS BEEN SUPPLYING ITS CUSTOMERS WITH HIGH QUALITY PRODUCTS FOR OVER 30 YEARS.**

SIMA has been a leader in the production of concrete mixing buckets since 1992 and is also a reference point for earthmoving equipment such as sweeper buckets, industrial sweepers, angled buckets and pallet forks.

The SIMA premises cover an area of over 10,000 m<sup>2</sup>, where all the design, production and commercial phases are performed.

The investments made over the years have led to a continuous development of the company, using state-of-the-art machinery and high quality materials. Our products are entirely conceived, designed and manufactured in Italy, where we prioritise efficiency and strength, guaranteeing long-lasting results even in extreme working conditions.







Thanks to its young and dynamic team, SIMA is oriented towards the future, designing and redesigning new equipment to make construction site work more practical and faster, guaranteeing a top quality Made in Italy product.

Full customer satisfaction is our main objective, which is why we pay particular attention to the design phase, during which we try to adapt and customise the equipment according to the actual working needs of our customers, as well as during the sales and after-sales process in order to offer a complete 360° service.

Founded in Italy in Sissa, a small town in the province of Parma, SIMA is now an internationally established company thanks to a widespread network of authorised dealers and workshops all over the world.





# Mixer bucket

 M+S HYDRAULIC

**HARDOX**  
IN MY BODY

*Danfoss*



- Robust
- High performance
- Large load capacity
- Easy installation
- Easy maintenance
- Hardox

**AREAS OF APPLICATION**



**Building works**



**Road works**



**Recycling**





The SIMA mixer bucket is the ideal equipment for producing concrete in a practical way and to transport it wherever needed, keeping the mixture in the best possible conditions. It performs its function quickly, as it only takes 3 minutes to perfectly mix the components.

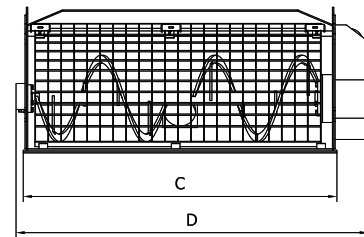
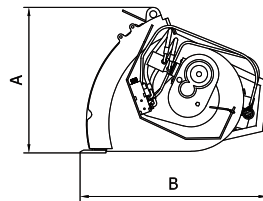
This product is SIMA's core business and, thanks to more than 30 years' experience in the sector, it undergoes constant improvements to ensure increasingly high levels of performance and resistance, especially for the most intense and busy uses.

SIMA mixer buckets can be applied to any type of skid loader, backhoe, wheel loader, telescopic lift, excavator and tractor with front loader.

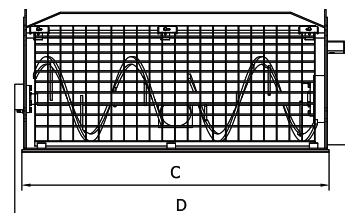
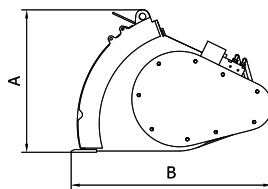
In the standard version, each model is supplied complete with mixer blades in Hardox500 steel, hot-dip galvanized grate

with bag breaker, Rexroth Bosch electro-magnetic distributor for opening and closing the drain, hydraulic hoses, electrical connection kit, discharge pipe, M + S hydraulic motor for models ranging from S10 to S40 and Danfoss hydraulic motor for models from S45 to S200. To improve the performance of the mixer bucket and make the concrete production more practical, SIMA offers several options such as, for example, the grid with hydraulic or gas spring opening, double bottom made of Hardox 450 wear-resistant steel, pressure regulating valves and SIMA System multi-attachment system to increase the possibilities of use.

In order to be able to optimise our products as much as possible (during heavy duty use or for special applications), we carry out customisations at the customer's specific request.



MODEL	CAPACITY (litres)	HEIGHT A (mm)	DEPTH B (mm)	WORKING WIDTH C (mm)	TOTAL WIDTH D (mm)	WEIGHT* EMPTY/FULL LOAD** (kg)	OIL CAPACITY (litres) recommended/max	PRESSURE (bar) continuous/max	TRANSMISSION
S10	100	650	700	800	1000	220/460	40/75	130/180	Gearbox
S15	150	700	850	800	1000	240/600	40/75	130/180	Gearbox
S20	200	700	850	1000	1250	280/760	40/75	130/180	Gearbox



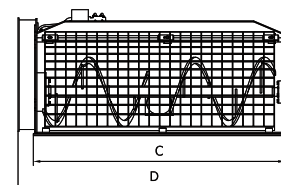
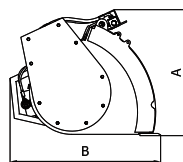
MODEL	CAPACITY (litres)	HEIGHT A (mm)	DEPTH B (mm)	WORKING WIDTH C (mm)	TOTAL WIDTH D (mm)	WEIGHT* EMPTY/FULL LOAD** (kg)	OIL CAPACITY (litres) recommended/max	PRESSURE (bar) continuous/max	TRANSMISSION
S25	250	750	900	1350	1550	365/965	40/75	140/180	Chain
S30	300	750	900	1400	1650	385/1105	40/75	140/180	Chain
S35	350	750	1000	1500	1700	425/1265	50/90	180/210	Chain

\* weight may vary depending on the type of attachment and optional equipment chosen

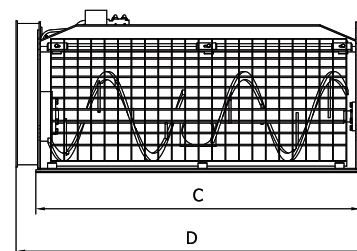
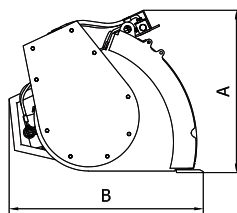
\*\* specific weight of concrete is 2400 kg/m<sup>3</sup>



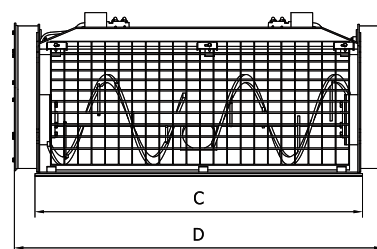
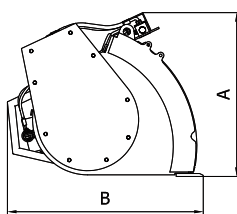
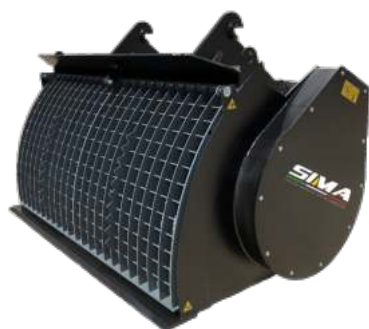
## Mixer bucket



MODEL	CAPACITY (litres)	HEIGHT A (mm)	DEPTH B (mm)	WORKING WIDTH C (mm)	TOTAL WIDTH D (mm)	WEIGHT* EMPTY/FULL LOAD** (kg)	OIL CAPACITY (litres) recommended/max	PRESSURE (bar) continuous/max	TRANSMISSION
S40	400	1000	1050	1400	1650	560/1520	65/90	160/190	Chain
S45	450	1050	1050	1560	1750	630/1710	70/150	160/190	Chain
S50	500	1050	1050	1760	1950	770/1970	70/150	160/190	Chain



MODEL	CAPACITY (litres)	HEIGHT A (mm)	DEPTH B (mm)	WORKING WIDTH C (mm)	TOTAL WIDTH D (mm)	WEIGHT* EMPTY/FULL LOAD** (kg)	OIL CAPACITY (litres) recommended/max	PRESSURE (bar) continuous/max	TRANSMISSION
S75	750	1200	1250	1800	1950	920/2720	125/240	180/200	Chain
S100	1000	1300	1300	2000	2100	1000/3400	125/240	160/190	Chain



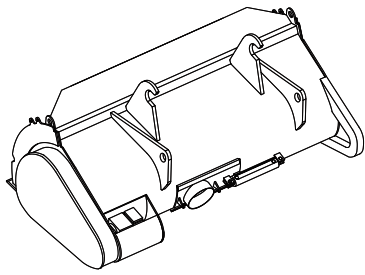
MODEL	CAPACITY (litres)	HEIGHT A (mm)	DEPTH B (mm)	WORKING WIDTH C (mm)	TOTAL WIDTH D (mm)	WEIGHT* EMPTY/FULL LOAD** (kg)	OIL CAPACITY (litres) recommended/max	PRESSURE (bar) continuous/max	TRANSMISSION
S150	1500	1600	1500	1800	2150	2200/5800	200/350	160/210	Chain 2 motors
S180	1800	1600	1500	2000	2350	2300/6650	200/350	160/210	Chain 2 motors
S200	2000	1600	1500	2200	2500	2450/7250	250/400	160/210	Chain 2 motors

\* weight may vary depending on the type of attachment and optional equipment chosen

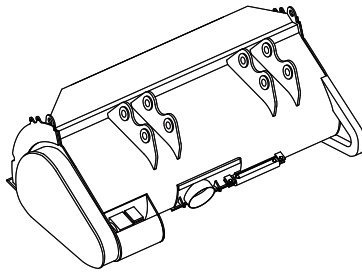
\*\* specific weight of concrete is 2400 kg/m<sup>3</sup>



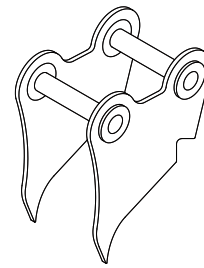
# Optional



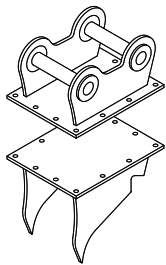
Quick attachment



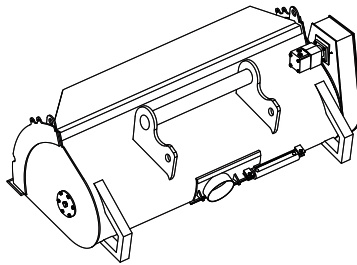
Direct attachment



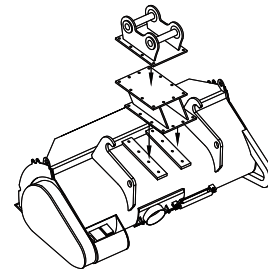
Excavator attachment



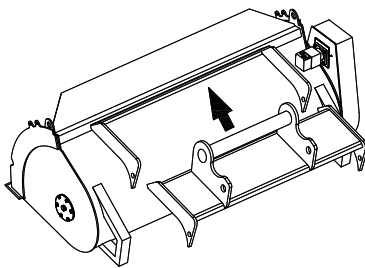
Perforated plate - counter plate



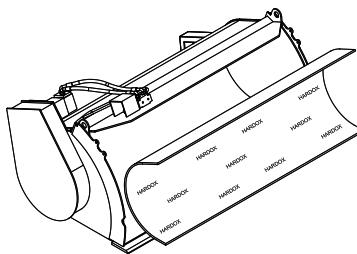
Attachment for telescopic lift



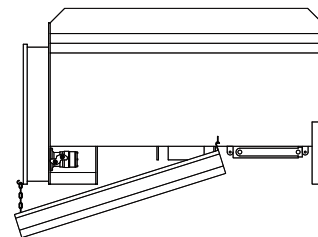
Double loader-excavator attachment



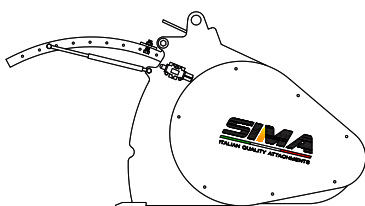
SIMA system



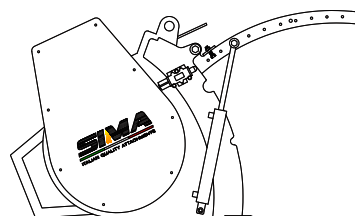
Hardox 450 reinforcement



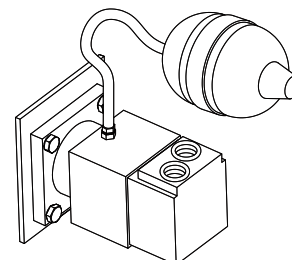
Side discharge



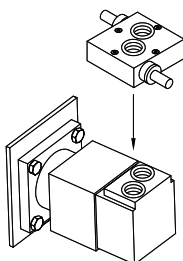
Pneumatic grid



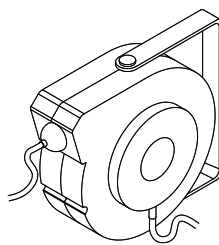
Hydraulic grid



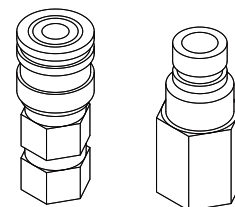
Pressure accumulator



Pressure regulator valve



Winder



Quick release couplings



# Sweeper



**M+S HYDRAULIC**

- Robust
- High performance
- Large load capacity
- Easy installation
- Easy maintenance

## AREAS OF APPLICATION



Road works



Recycling



Green areas



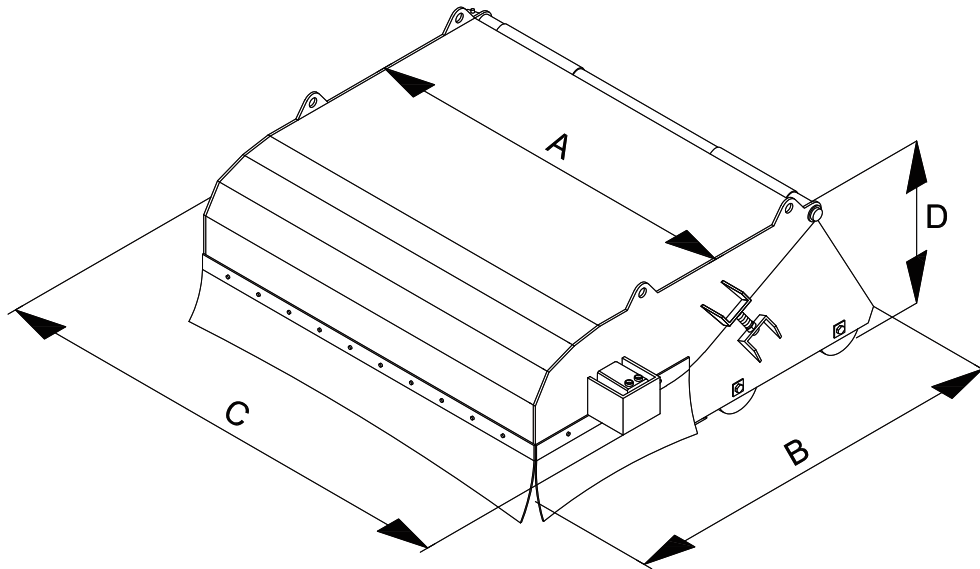


The SIMA SPZ sweeper is the ideal equipment for collecting milled asphalt, large quantities of gravel and other construction site aggregates. It is designed to be applied to the front of earthmoving equipment such as skid loaders, backhoe loaders, wheel loaders and telescopic lifts.

These attachments are made with a very strong structure, designed for intensive use, which guarantees solidity and reliability over time and are equipped as standard with  $\varnothing$  600 mm polypropylene brushes (on request it is possible to equip them completely either with steel or mixed), reversible

double-bevel bolted blade combined with anti-wear slides, direct drive motor on the shaft, side and front rubber protection and hoses for hydraulic connection.

To make the sweeper more efficient, SIMA offers various optional extras such as, for example, the side brush ( $\varnothing$  580 mm) made of polypropylene or steel, which is ideal for cleaning hard-to-reach areas (kerbs, walls, fences, etc.), the pressurised sprinkling kit for reducing dust, including a 100 litre tank, and nylon or steel support wheels for cleaning delicate surfaces.

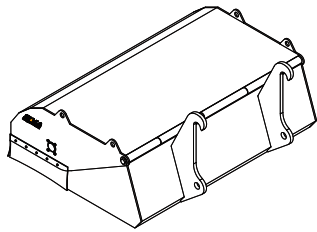


MODEL		SPZ12	SPZ15	SPZ18	SPZ21	SPZ24	SPZ26
CAPACITY	Litres	340	430	500	600	680	740
TOTAL WIDTH - C	mm	1450	1750	2100	2400	2700	2900
WORKING WIDTH - A	mm	1200	1500	1800	2100	2400	2600
DEPTH - B	mm	1500	1500	1500	1500	1500	1500
HEIGHT - D	mm	750	750	750	750	750	750
WEIGHT	kg	310*	350*	450*	520*	640*	720*
$\varnothing$ BRUSH	mm	600	600	600	600	600	600
NO. BRUSHES	no.	30	34	40	46	54	59
OIL FLOW recommended/max	Litres	40/75	40/75	50/90	50/90	50/90	50/90
PRESSURE continuous/max	bar	140/180	140/180	180/210	180/210	180/210	180/210

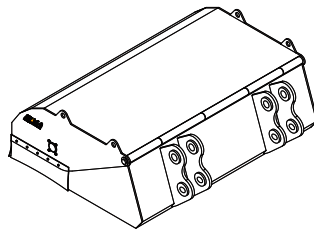
\* weights may vary depending on the type of attachment and optional equipment used



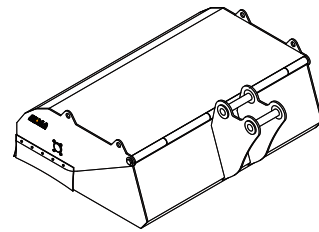
# Optional



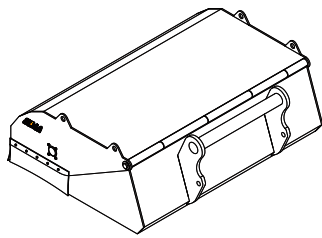
Quick attachment



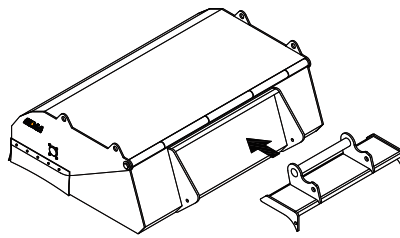
Direct attachment



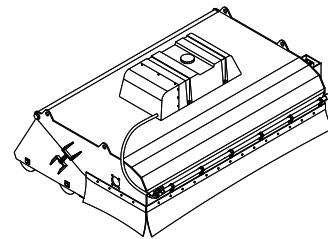
Excavator attachment



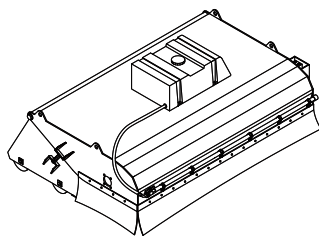
Telescopic lift attachment



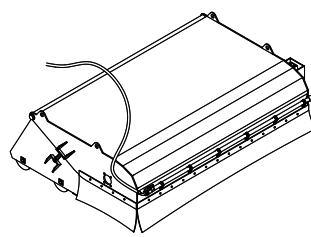
SIMA system



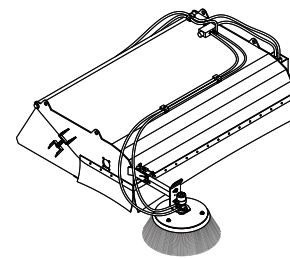
Pressurised sprinkling kit



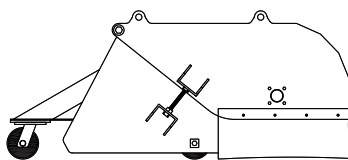
Gravity sprinkling kit with tank



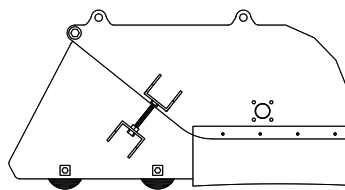
Gravity sprinkling kit



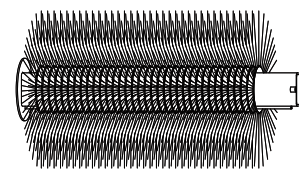
Polypropylene or steel side brush



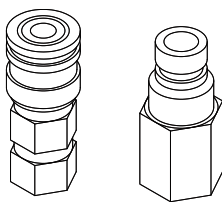
Nylon-steel outer wheels



Nylon-steel inner wheels



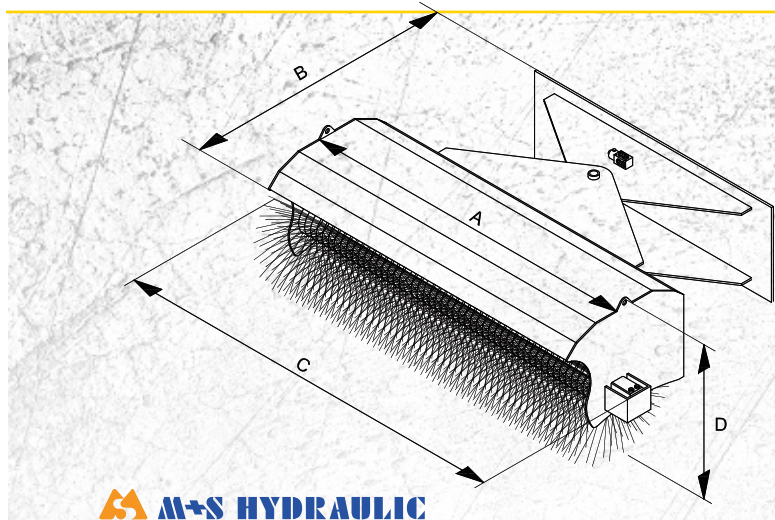
Steel or mixed shaft brushes



Quick release couplings



# Sweeper angled



**M+S HYDRAULIC**



The SIMA SPZ-A sweeper is the ideal piece of equipment for clearing dirt at the side of roads or clearing them of snow and leaves. It is designed to be applied to the front of earthmoving equipment such as skid loaders, backhoe loaders, wheel loaders and telescopic lifts. In order to achieve 100% performance on excavators, too, a fully dedicated version has been designed. This equipment is made with a very robust structure, designed for heavy-duty use, which guarantees solidity and

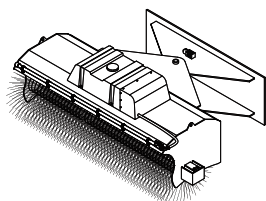
reliability over time. The SPZ-A is supplied as standard with polypropylene brushes Ø 600 mm (steel or mixed brushes can be supplied on request), direct drive motor on the shaft and hoses for hydraulic connection.

To make the angle sweeper more efficient, SIMA offers various optional extras such as, for example, hydraulic tilting, support wheels and a pressurised sprinkling kit with tank for dust removal.

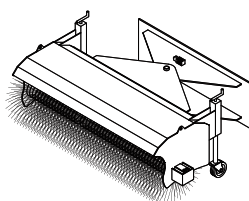
MODEL	TOTAL WIDTH (mm)-C	WORKING WIDTH (mm)-A	DEPTH (mm)-B	HEIGHT (mm)-D	WEIGHT (kg)	BRUSH DIAMETER (mm)	NUMBER OF BRUSHES	OIL CAPACITY (litres) recommended/max	PRESSURE (bar) continuous/max
SPZ 15A	1680	1560	1260	645	300	600	34	40/75	140/180
SPZ 18A	1980	1860	1260	645	340	600	40	50/90	180/210
SPZ 21A	2280	2160	1260	645	400	600	46	50/90	180/210
SPZ 24A	2580	2460	1260	645	450	600	54	50/90	180/210
SPZ 26A	2780	2660	1260	645	500	600	59	50/90	180/210

\* weights may vary depending on the type of attachment and optional equipment used

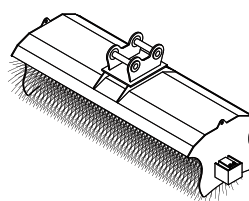
## Optional



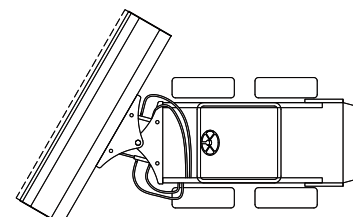
Sprinkling kit



Wheels



Excavator version



Hydraulic tilting

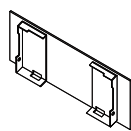
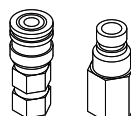
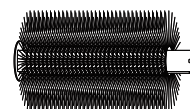


Plate with operating machine attachment



Quick release couplings



Steel or mixed shaft brushes

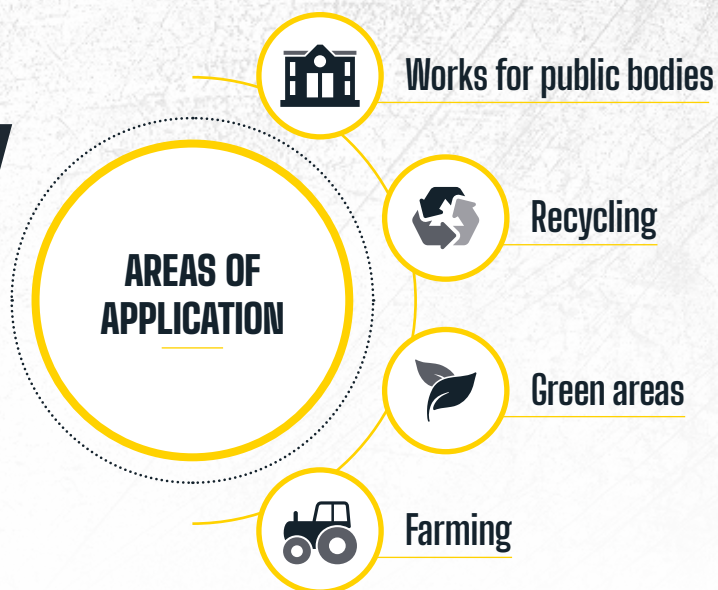


# Sweeper industrial



 M+S HYDRAULIC

- Robust
- High performance
- Adaptable to any surface
- Easy to use
- Easy maintenance



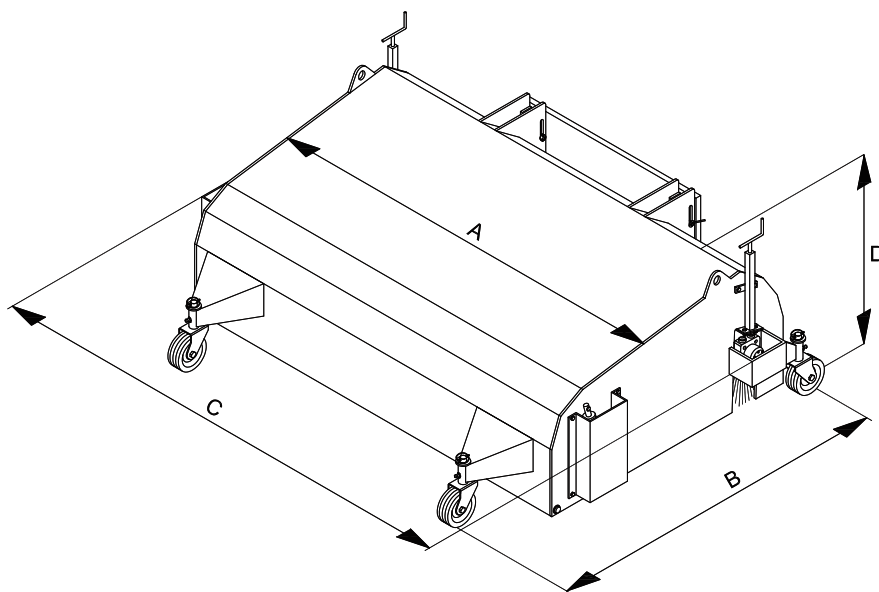


The SIMA SPZ-i industrial sweeper is the ideal equipment for cleaning squares, pavements, cycle paths and areas where you want to pick up even the finest material. It is designed to be applied to the front of earthmoving equipment such as skid loaders, backhoe loaders, wheel loaders and telescopic lifts.

These attachments are made with a very strong structure, designed for intensive use, which guarantees solidity and reliability over time and are equipped as standard with Ø 600 mm polypropylene brushes (on request it is possible to equip them completely either with steel or

mixed), Vulkollan blade, direct drive motor on the shaft, hydraulic opening of the dust collection box, Ø 250 mm solid rubber pivoting wheels, floating coupling system to the operating machine, hoses for hydraulic connection and kit for electrical connection.

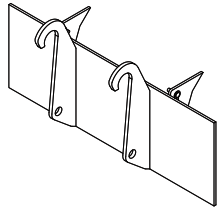
To make the sweeper more efficient, SIMA offers various optional extras such as, for example, the side brush (Ø 580 mm) made of polypropylene or steel, which is ideal for cleaning hard-to-reach areas (kerbs, walls, fences, etc.), the pressurised sprinkling kit for reducing dust, including a 100 litre tank, and adaptation for forklift trucks.



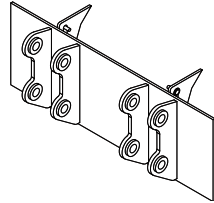
MODEL		SPZ12i	SPZ15i	SPZ18i	SPZ21i	SPZ24i	SPZ26i
CAPACITY	Litres	250	320	370	430	500	540
TOTAL WIDTH - C	mm	1460	1760	2110	2410	2710	2910
WORKING WIDTH - A	mm	1200	1500	1800	2100	2400	2600
DEPTH - B	mm	1750	1750	1750	1750	1750	1750
HEIGHT - D	mm	950	950	950	950	950	950
WEIGHT*	kg	400	460	530	590	650	710
ØBRUSH	mm	600	600	600	600	600	600
NO. BRUSHES	no.	30	34	40	46	54	59
OIL FLOW recommended/max	Litres/mln.	40/75	40/75	50/90	50/90	50/90	50/90
PRESSURE continuous/max	bar	140/180	140/180	180/210	180/210	180/210	180/210

\* weights may vary depending on the type of attachment and optional equipment used

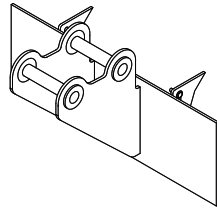
# Optional



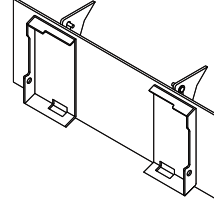
Quick attachment



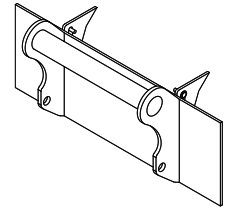
Direct attachment



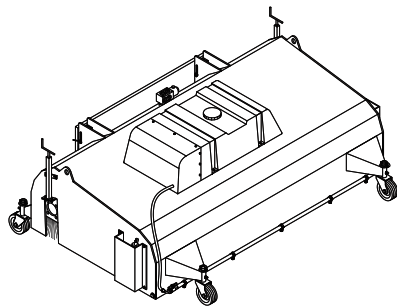
Excavator attachment



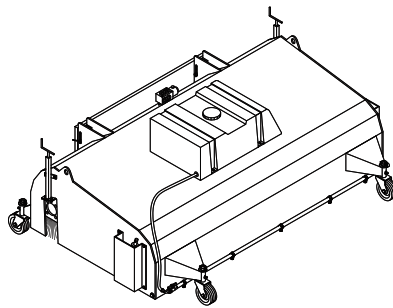
Skid loader attachment



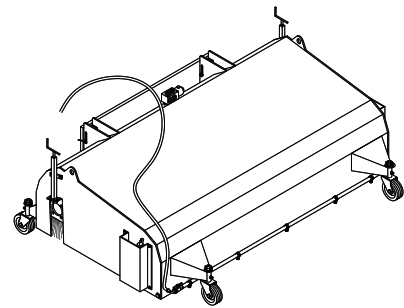
Telescopic lift attachment



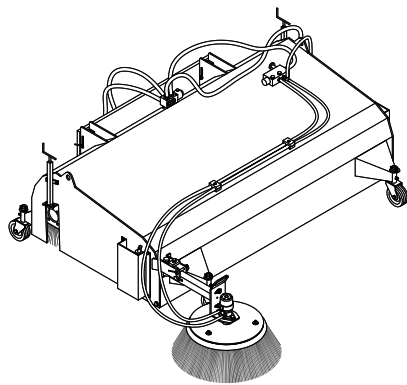
Pressurised sprinkling kit



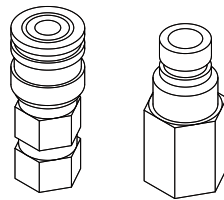
Gravity sprinkling kit with tank



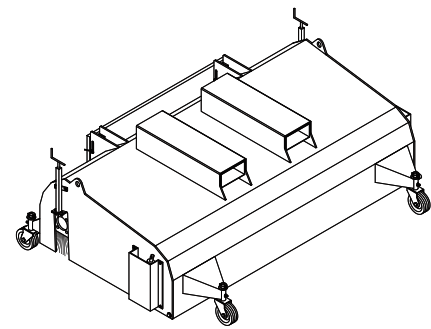
Gravity sprinkling kit



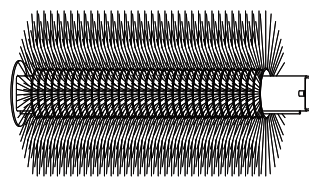
Polypropylene or steel side brush



Quick release couplings



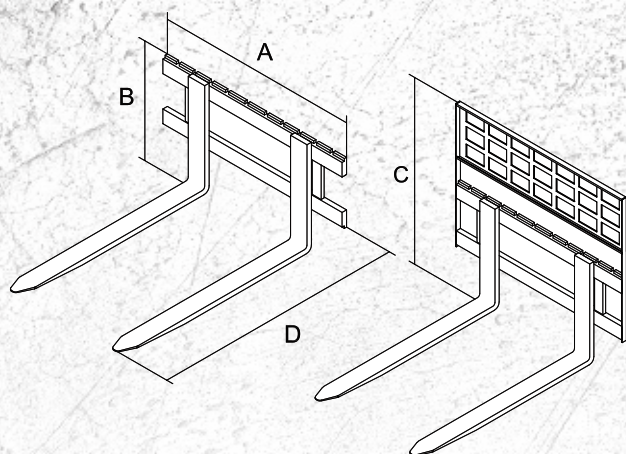
Forklift attachment



Steel or mixed shaft brushes



# Forks for pallets



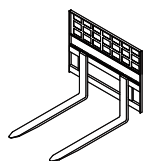
SIMA lifting forks are suitable for use on construction sites, where pallets of different sizes and weights or other materials such as reinforced concrete pipes, manholes, metal fences, etc. need to be handled. Depending on the load capacity, they can be combined with

any type of skid loader, backhoe loader, wheel loader or telescopic lifts. For skid loaders, it is strongly recommended to complete the purchase with the anti-tipping protection of the transported load.

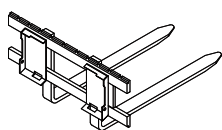
MODEL	FORKS (mm)	CAPACITY KG	FEM MEASUREMENT	A (mm)	B (mm)	C (mm)	D (mm)	WEIGHT KG	PROTECTION
FEM1	80x30x1200	1000	FEM 1A	1200	440	850	1260	130	STANDARD
FEM2	100x35x1200	1800	FEM 2A	1200	520	950	1270	140	STANDARD
FEM2	100x35x1200	1800	FEM 2A	1500	520	950	1270	160	OPTIONAL
FEM2	100x40x1200	2500	FEM 2B	1500	530	1025	1280	175	OPTIONAL
FEM2	100x45x1200	3000	FEM 2B	1500	530	1025	1290	190	OPTIONAL
FEM <sup>3</sup>	120x45x1200	3500	FEM 3B	1500	620	-	1300	380	N.D.
FEM <sup>3</sup>	120x50x1200	4500	FEM 3B	1500	620	-	1310	420	N.D.
FEM <sup>3</sup>	150x50x1200	5000	FEM 3B	1500	620	-	1310	460	N.D.

\* weights may vary depending on the type of attachment and optional equipment used

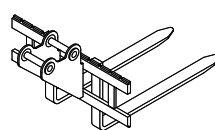
## Optional



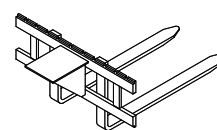
ANTI-TIPPING protection



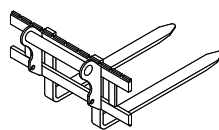
SKID LOADER attachment



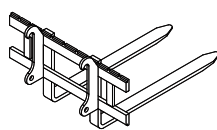
Excavator attachment



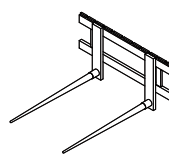
SMOOTH PLATE excavator attachment



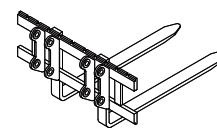
Telescopic lift attachment



Quick attachment



Roto-baler forks



Direct attachment



**OVER 30 YEARS' EXPERIENCE**

**STATE-OF-THE-ART MACHINERY**

**PRODUCTION FLEXIBILITY**

**HIGH QUALITY MATERIALS**

**100% MADE IN ITALY**

**ALWAYS AT THE SERVICE OF OUR CUSTOMERS**



Via G. di Vittorio, 17 - 43018 Sissa (PR) Italy

+39 0521 879 514 | +39 0521 879 532 | [info@simapr.it](mailto:info@simapr.it) | [export@simapr.it](mailto:export@simapr.it)

[www.simapr.it](http://www.simapr.it)



Rexroth  
Bosch Group

